

Installation, Operation and Maintenance Instructions

Controller Manual

3216 Programming Wizard

3216 Programming Wizard

Contents

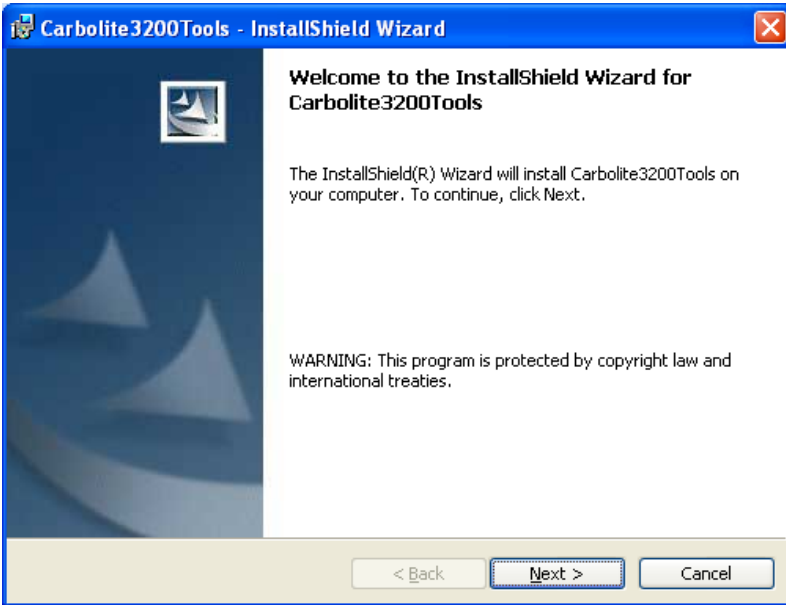
This manual is for guidance on the use of the Carbolite Gero product specified on the front cover. This manual should be read thoroughly before unpacking and using the furnace or oven. The model details and serial number are shown on the back of this manual. Use the product for the purpose for which it is intended.

1.0	3216 Programming Wizard User Guide	3
1.1	Installing the Software	3
2.0	Establishing Connection	4
	Creating Program Clone Files	6
2.1	Loading Program Clone Files to the 3216 Temperature Controller	9
3.0	Run a Program Using the Controller	12

1.0 3216 Programming Wizard User Guide

1.1 Installing the Software

Insert the 3216 Programming Wizard CD into your computer. The following window will appear.

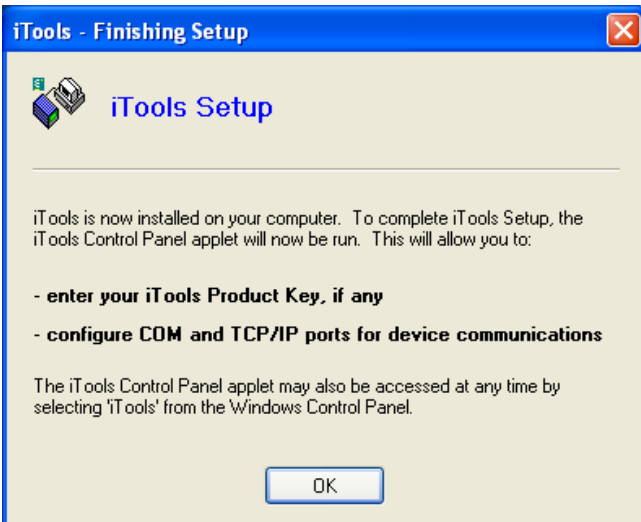


Click 'Next' & accept the licence.

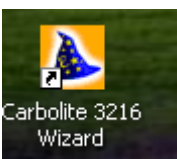
Input your Name and organisation and click Next.

Select the complete installation. Start the installation.

After the installation the following window will appear.



Click 'OK' and if iTools is already installed the product ID key will be complete. Click OK. Click finish on the wizard installation window.



The 3216 Programming Wizard short cut icon will have been added to your desktop.

2.0 Establishing Connection

Connect the computers 9 pin serial connector (male) to the 9 pin connector on the product (female) via a 'straight through' RS232, or RS485, cable. If the computer does not have a 9 pin serial connector use a 9 pin RS232, or RS485, to USB converter and connect through a USB port on the computer.

Switch on the product.

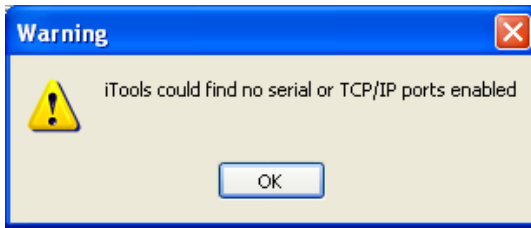
Double click the 3216 Programming Wizard short cut to start the software.



Click to 'configure a device connected to this computer'

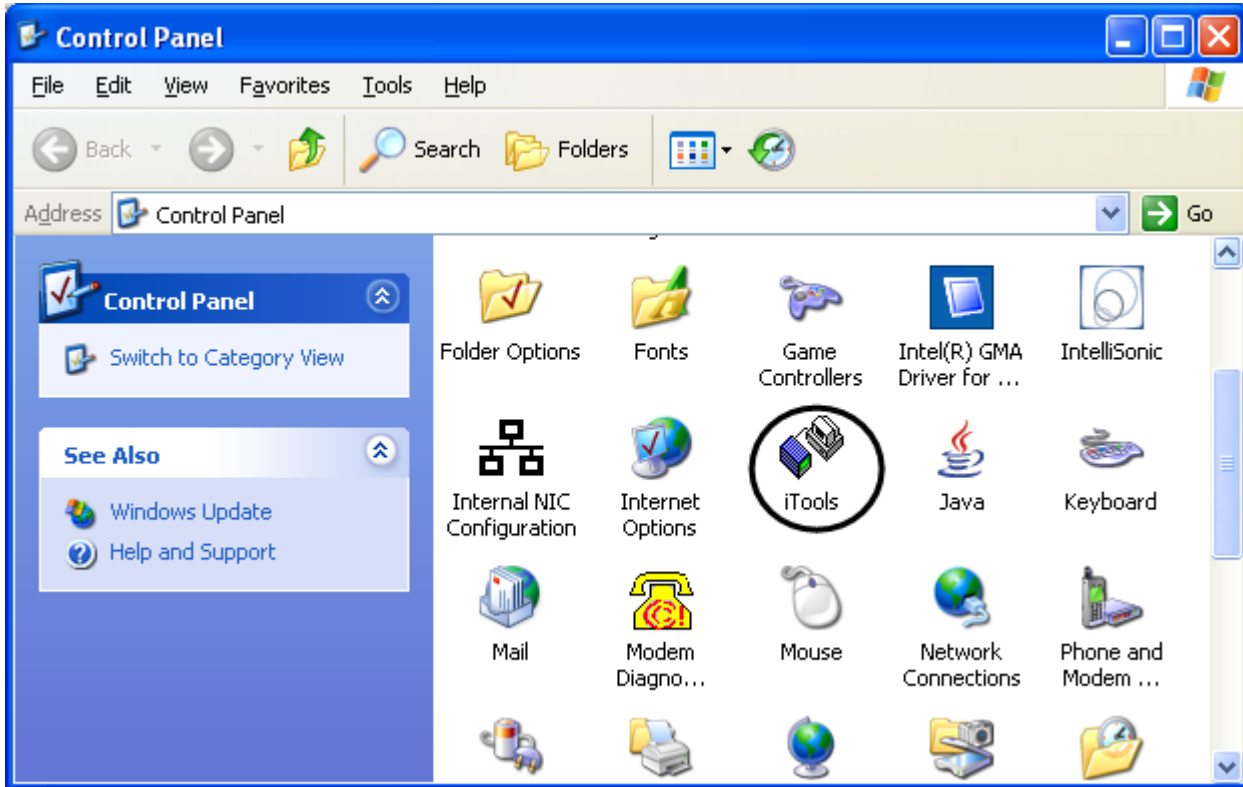


The software will scan for devices. The 3216 Controller should be found. Click 'Next'. You may get this message:

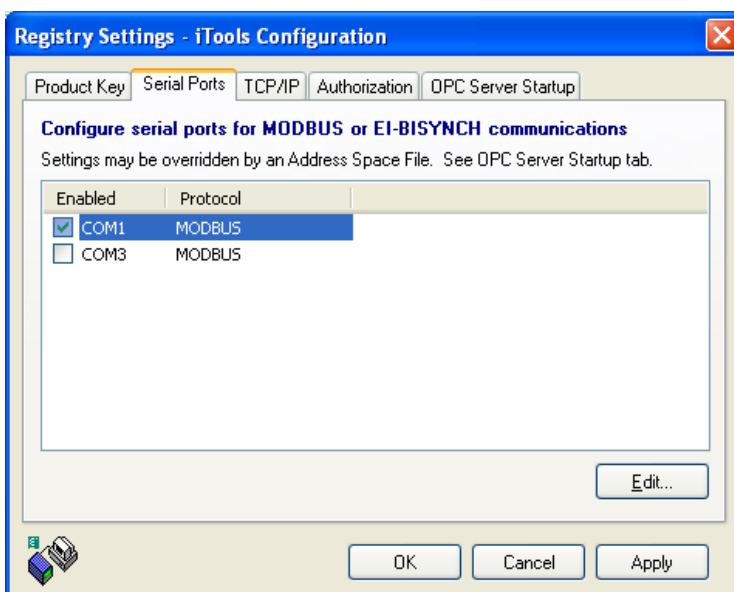


If you do not get this message, open the windows control panel (not in the iTools software) and double click the iTools icon.

Note: This icon can be seen in large icon view not category view.



The 'Registry Settings – iTools Configuration' window will appear.



Click on the 'Serial Ports' tab

Click the 'COM1' tick box to enable the serial port

Click 'Apply' and close this window and close the control panel window.

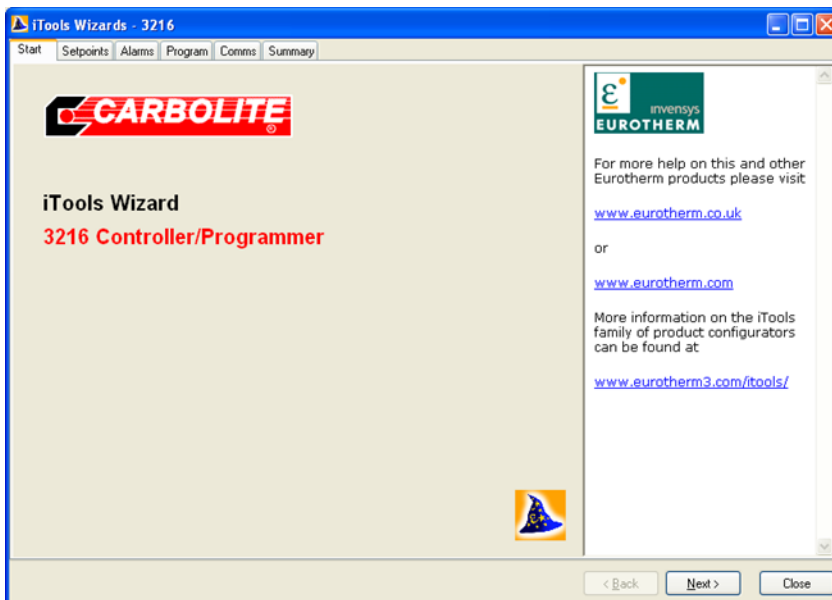
The Program will then be able to find the device when scanning.

The following window will appear.

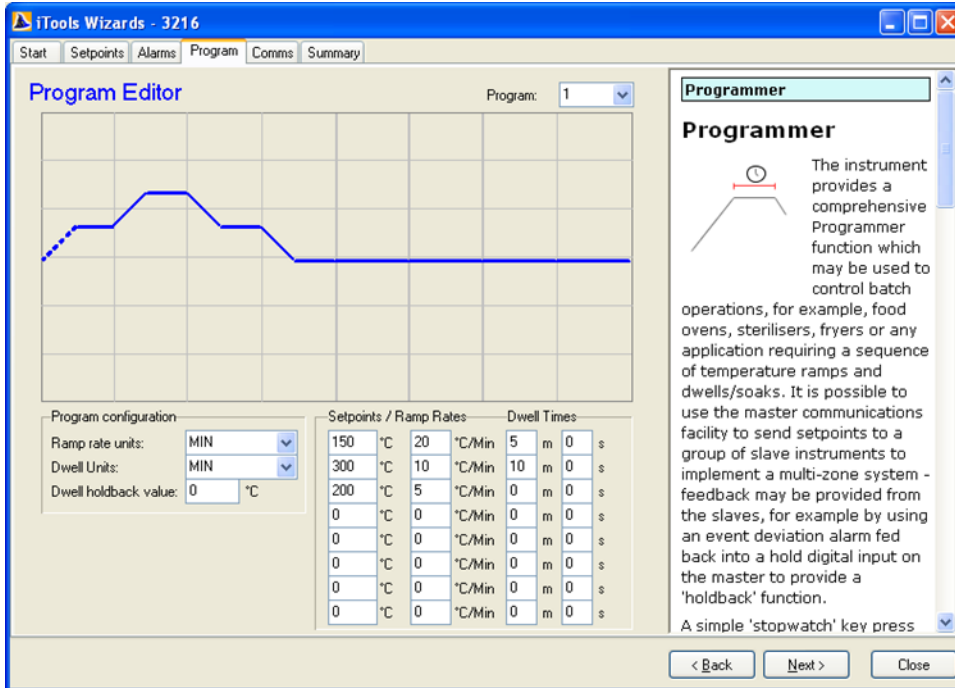


Accept the default selected 'Carbolite 3216 Wizard' and click next and this will take you to the 'iTools Wizard 3216' interface screen.

Creating Program Clone Files

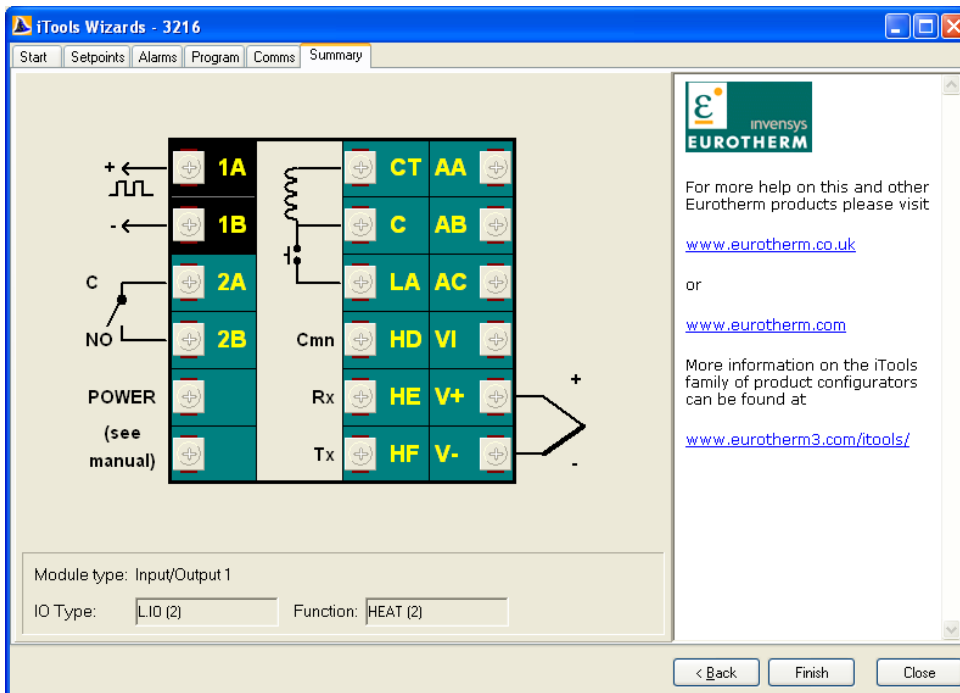


Click on the 'Next' button until you get to the 'Programs' tab or click on the 'Programs' tab directly

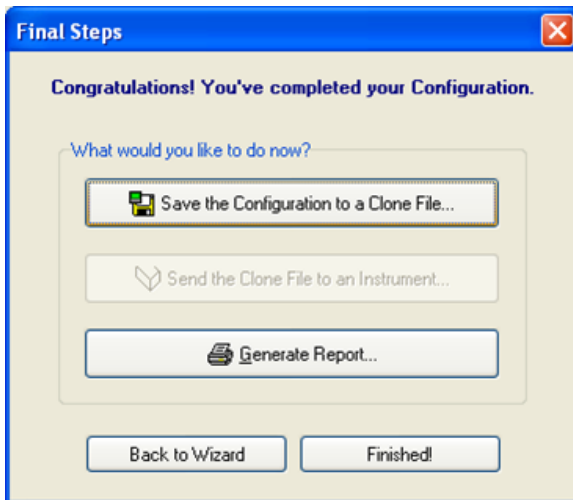


Enter the values required for your program. There is help text on the right hand side of the window.

Click the next button until you get to the 'Summary' tab or click the 'Summary' tab directly.

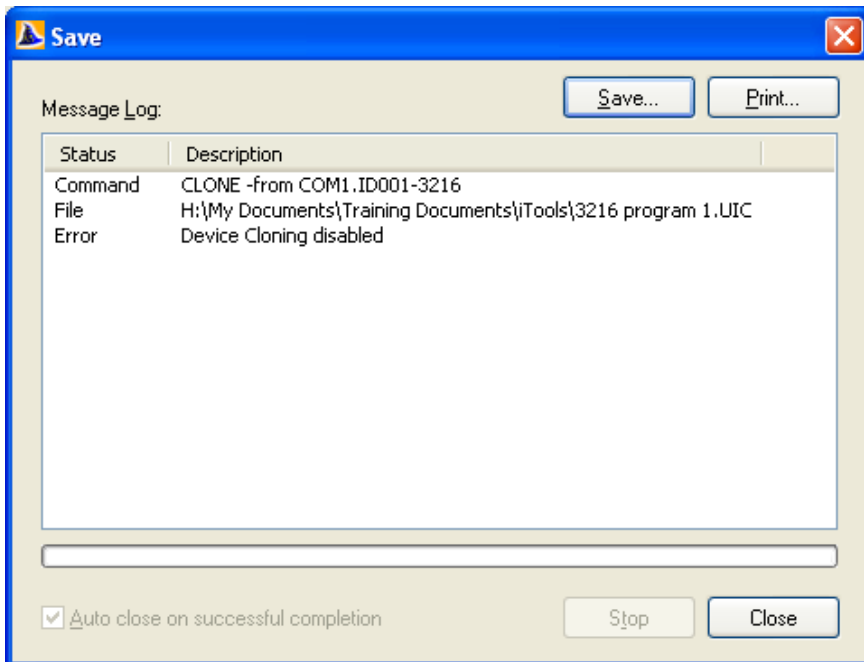


Click the 'Finish' button

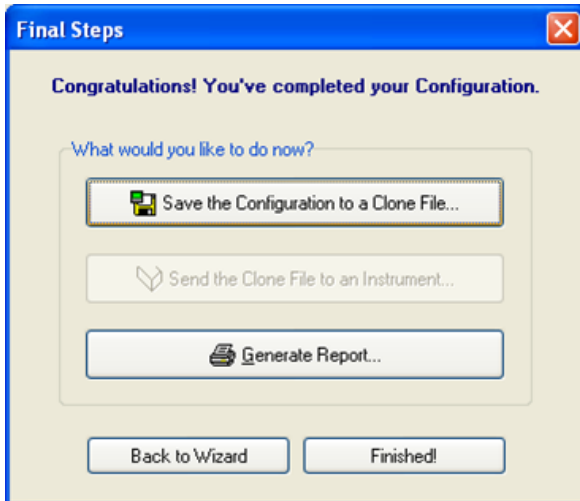


Click on the 'Save the Configuration to a Clone File' button so your program can be recalled for future use. Enter the location and file name and save.

After saving you will be prompted to save or print a 'message log' file.



Click 'Save' or 'Print' if you wish then click close on this window



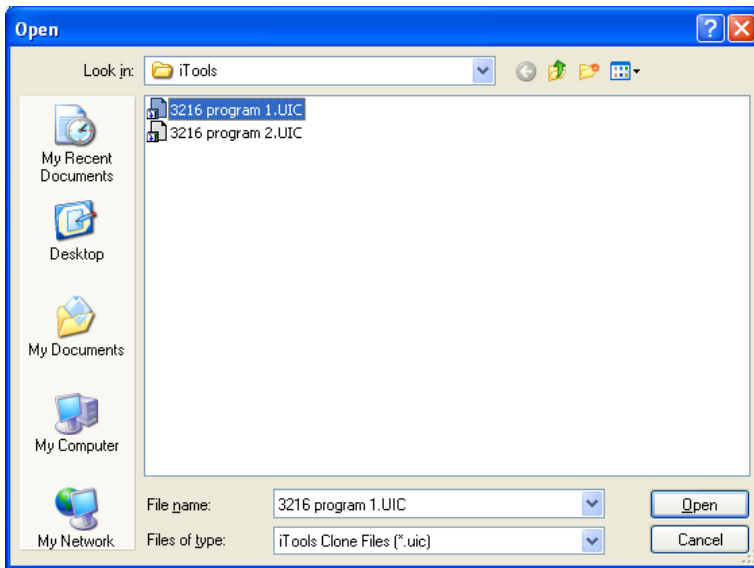
Click on the 'Back to Wizard' button if you wish to set up and save more clone files or the 'Finished' button.

2.1 Loading Program Clone Files to the 3216 Temperature Controller

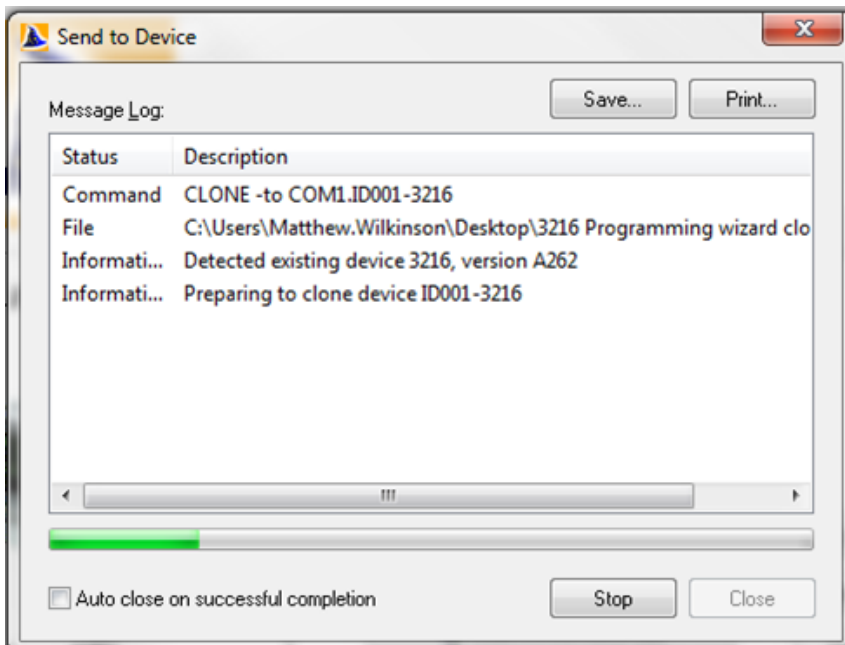
Start the wizard software as before. When you get to this window



Choose the 'Download Clone File to Device' button



Select the program clone file you wish to download and click 'Open'



Choose if to print or save the 'message log' and then click 'Close'



Then click the 'Next' button and this will take you to the ' iTools Wizard 3216' interface screen.



3.0 Run a Program Using the Controller



To select a program press the  button until PROG 1 appears.

Then press  or  to select the correct program.

To run the program press and quickly release  +  at the same time.

To stop the program press and hold  +  at the same time.

ProductLabel

The products covered in this manual are only a small part of the wide range of ovens, chamber furnaces and tube furnaces manufactured by Carbolite Gero for laboratory and industrial use. For further details of our standard or custom built products please contact us at the address below, or ask your nearest stockist.

For preventive maintenance, repair and calibration of all furnace and oven products, please contact:

Carbolite Gero Service

Telephone: + 44 (0) 1433 624242

Fax: +44 (0) 1433 624243

Email: ServiceUK@carbolite-gero.com

Carbolite Gero Ltd,

Parsons Lane, Hope, Hope Valley,
S33 6RB, England.

Telephone: + 44 (0) 1433 620011

Fax: + 44 (0) 1433 621198

Email: Info@carbolite-gero.com

www.carbolite-gero.com

CARBOLITE
GERO 30-3000°C

Copyright © 2018 Carbolite Gero Limited